

SHARD

Technical Rider
V1

as of: 27.10.2024

Premiere: 02.08.2023
TANZWERKSTATT EUROPA
Schwere Reiter Theater, Munich, Germany

Concept & Choreography: Ceren Oran & Moving Borders
Duration: 45 min

CONTENT_

Stage_	2
Lights_	3
Light Plot Generic	4
Sound_	5
Set up_	6
Requirements Total_	7
Contact_	8

STAGE_

The show is a 45 minutes **contemporary dance choreography** for adults with **recorded music** in a empty stage (black box) on **black dance floor**. **The audience seating is in a circle around the performing area. 13 seats in the audience are needed for the performers.**

The area for performance + audience should measure min **10 x 10 m** (ideally **12 x 12 m**) and needs to be on the same level. The **clear height** of the venue should at least be **4 m**.

In the beginning of the piece a strong sound and light effect is used (no strobe). We don't use pyrotechnics, laser or open fire.

VENUE PROVIDES:

Stage Size	Min. 10x10 m Ideal: 12 x 12 m	Black box
Dancefloor	10 x 10 m (12 x 12 m)	Black, audience seats will be on the dancefloor
Dancefloortape		black
Audience seating (chairs + pillows), number depending on diameter of circle		
All Rigging necessary for hanging lights as in the light plot		

COMPANY PROVIDES:

costumes

LIGHTS_

The lighting consists of the following parts (depending on venue height):

- 1) Full Wash of Performing + Audience Area with Top Light LED: 24x LED-PAR RGBWA (> 30°)
- 2) One Row (Circle) of Profiles: 8x Profile 25-50° > 750 W (e.g. ETC S4 Zoom Profile)
- 3) One Row/Circle of Top Light for Audience: 8x 1 KW Fresnel
- 4) One Row/Circle of Top Lights for Performance Area: 8x 1 KW Fresnel
- 5) One Row/Circle of Top Lights in the Center: 4x 2 KW Fresnel
- 6) 2 Specials for Positions of Performers: 2x Profile >575 W (e.g. ETC S4 junior)
- 7) 1 LED-Moving Light Profile with Gobo: 1x JB Lighting P10
- 8) 4 LED-Moving Light for Light Effect: Wash Moving light Cold white (Originally used: 4x JB Lighting P10)

VENUE PROVIDES:

Light Board	Preferably: ETC Ion XE, Gio	We have a show file for ETC EOS, otherwise we need time for programming and a light board operator
24x	LED PAR	RGBWA, >30° or Zoom
16x	Fresnel 1 KW	or PC
4x	Fresnel 2 KW	or PC
10x	Profiles	750 W or 1 KW
5x	LED Moving Light	JB Lighting P10 (Alternatives possible)
All fixtures with barndoors and color filter frames		
Gels	R119	If necessary (when using PCs)
	L201	8x Fresnel 1KW, 4x Fresnel 2KW, 10x Profiles
30x	Dimmers	> 2 KW
All necessary cabling		

COMPANY PROVIDES:

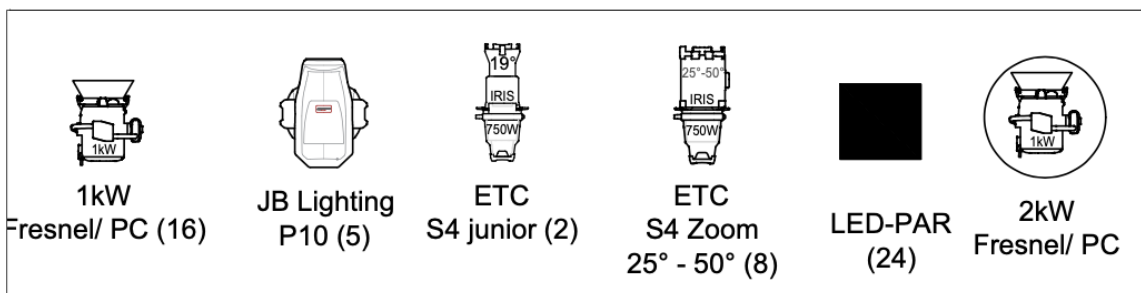
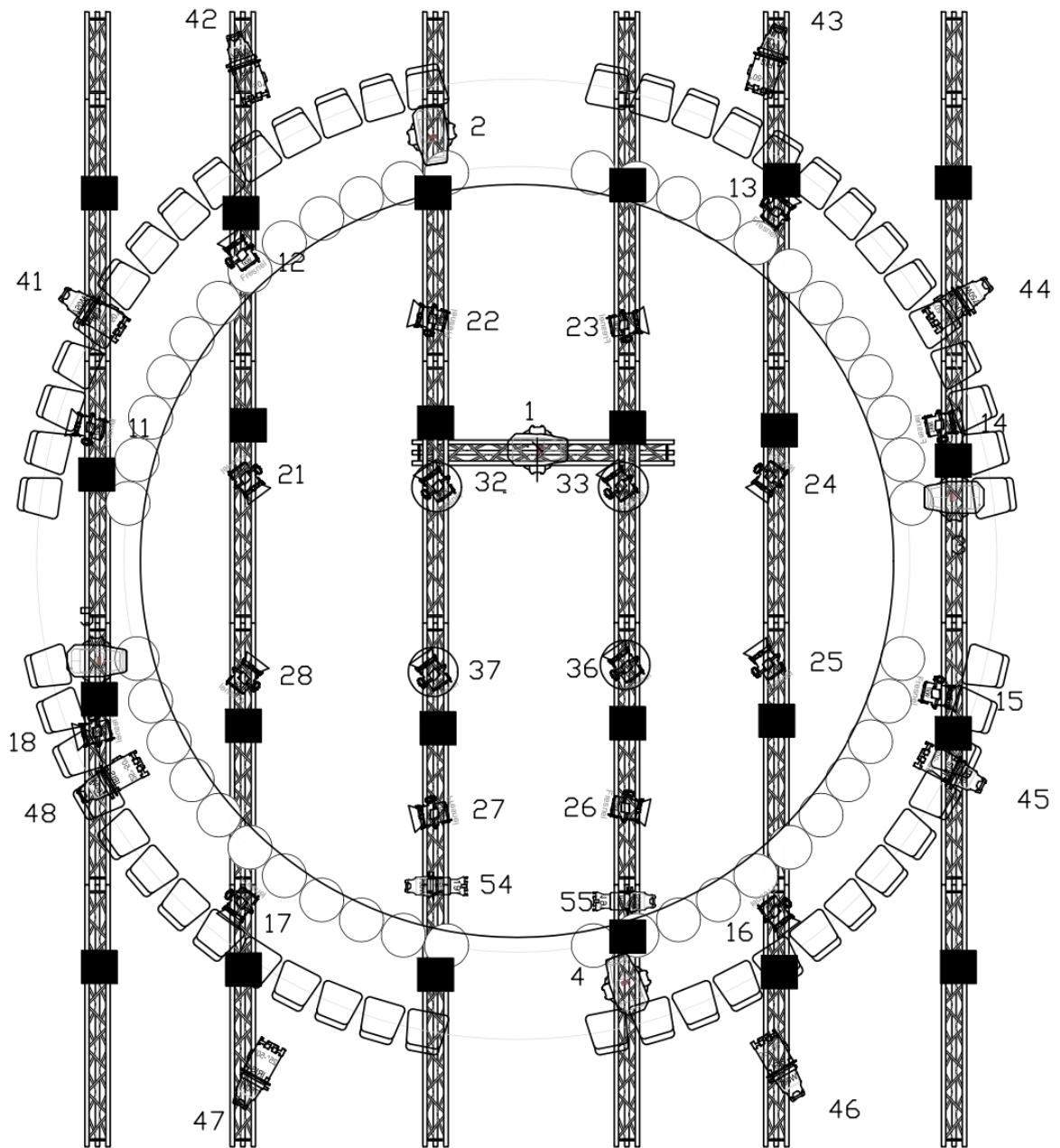
ETC EOS show file

All requirements can change in accordance with the room, technical equipment et al., and will be discussed and readjusted beforehand.

The team will run the show.

LIGHT PLOT GENERIC_

blackbox



SOUND_

The show runs with **recorded music (1 sound file)**

Minimum: 2-way sound system, 2 speakers diagonally placed behind the audience

Ideal: 4-way-sound system, 4 speakers diagonally placed in 4 corners behind the audience

VENUE PROVIDES:

PA-System	professional	Capable of playing high-quality sound for audience and performers (monitoring for performers if necessary)
Input	Mini-Jack	
Laptop (Mac)	With QLab (Full Licence Audio, Video or Light)	Sound and Light is synchronized via OSC

COMPANY PROVIDES:

QLab File

SET UP_

The set up takes around 6 hours, depending on the room, equipment and personnel.

After the set up the team requires 4 h rehearsal time.

The duration of the show is approx. 45 minutes.

Clearing the stage can start directly after the last show and takes around 15 min.

SCHEDULE

2,5 h hanging lights

30 min set up of chairs

2 h focusing lights

1 h programming lights (corrections)

30 min soundcheck (if PA is ready and already set up)

4 h rehearsal

e.g.:

9 – 15 h Set up

15 – 19 h Rehearsal

The dancefloor should be ready and taped when we arrive. Otherwise the time for laying the dancefloor has to be added to the set up time.

Set up time can be reduced if lights are pre-rigged. We can provide an adapted light plot for you.

PERSONNEL PROVIDED BY VENUE

2 light technicians, 6 hours

1 sound technician, 2 hours

Stage technicians for dancefloor and audience seating

TOTAL REQUIREMENTS_

Stage	Lights	Sound
Dimension: min. 10x10 m Ideal: 12 x 12 m Clear height: min. 4m	24x LED PAR RGBWA (>30° or Zoom)	professional PA-System (2-way or 4-way)
Black dancefloor 10x10 m (12x12 m)	16x Fresnel 1 KW	Mini-jack input
Black box	4x Fresnel 2 KW	Laptop with QLab Full Licence
All rigging for lights	10x Profile 750 W 25-50°	
	1x LED Moving Light Profile: JB Lighting P10	
	4x LED Moving Light: Wash Light Cold White	
	30x Dimmers	
	Light board: ETC Ion XE, Gio	
	Gels: R119, L201	
	All cabling	
	All fixtures with barndoors and color frames	

CONTACT_

Tech:

Ramona Lehnert

lehnert.mona@gmail.com

+49 (0)157 39334937

Production:

Karolína Hejnová

karolina.hejnova@gmail.com

+49 (0)178 32 69 527